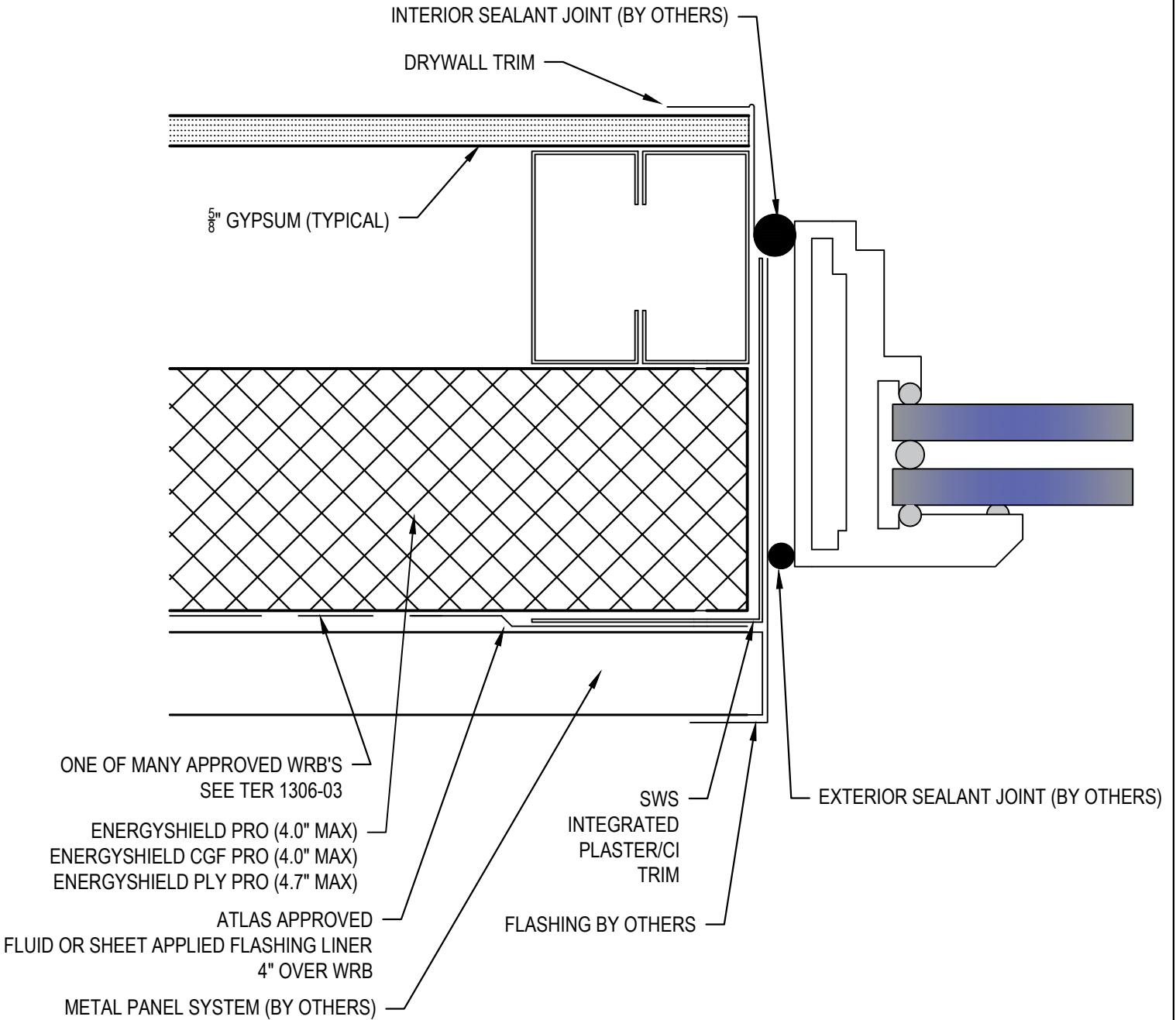


NFPA 285 DETAIL NOTES:

ALL DETAILS TO BE REVIEWED BY A DESIGN PROFESSIONAL PRIOR TO USE.
 DETAIL IS INTENDED TO PROVIDE NFPA 285 GUIDANCE FOR INSULATION INSTALLATION
 AND WINDOW DETAIL ONLY.
 REFER TO TER 1306-03 FOR A LIST OF ACCEPTABLE NFPA 285 COMPLIANT COMPONENTS.
 FLASH WINDOW & DOOR OPENINGS PER WRB MANUFACTURER'S GUIDELINES.



NOTE: WHEN ACM'S ARE USED, A MAXIMUM 2.25" AIR GAP BEHIND CLADDING IS APPROVED.



ENERGYSHIELD PRO WINDOW SMP

JAMB DETAILS

For Reference Only

DATE / REVISION

09/20/18

NOT TO SCALE

DETAIL NO.

ES.S.B.11